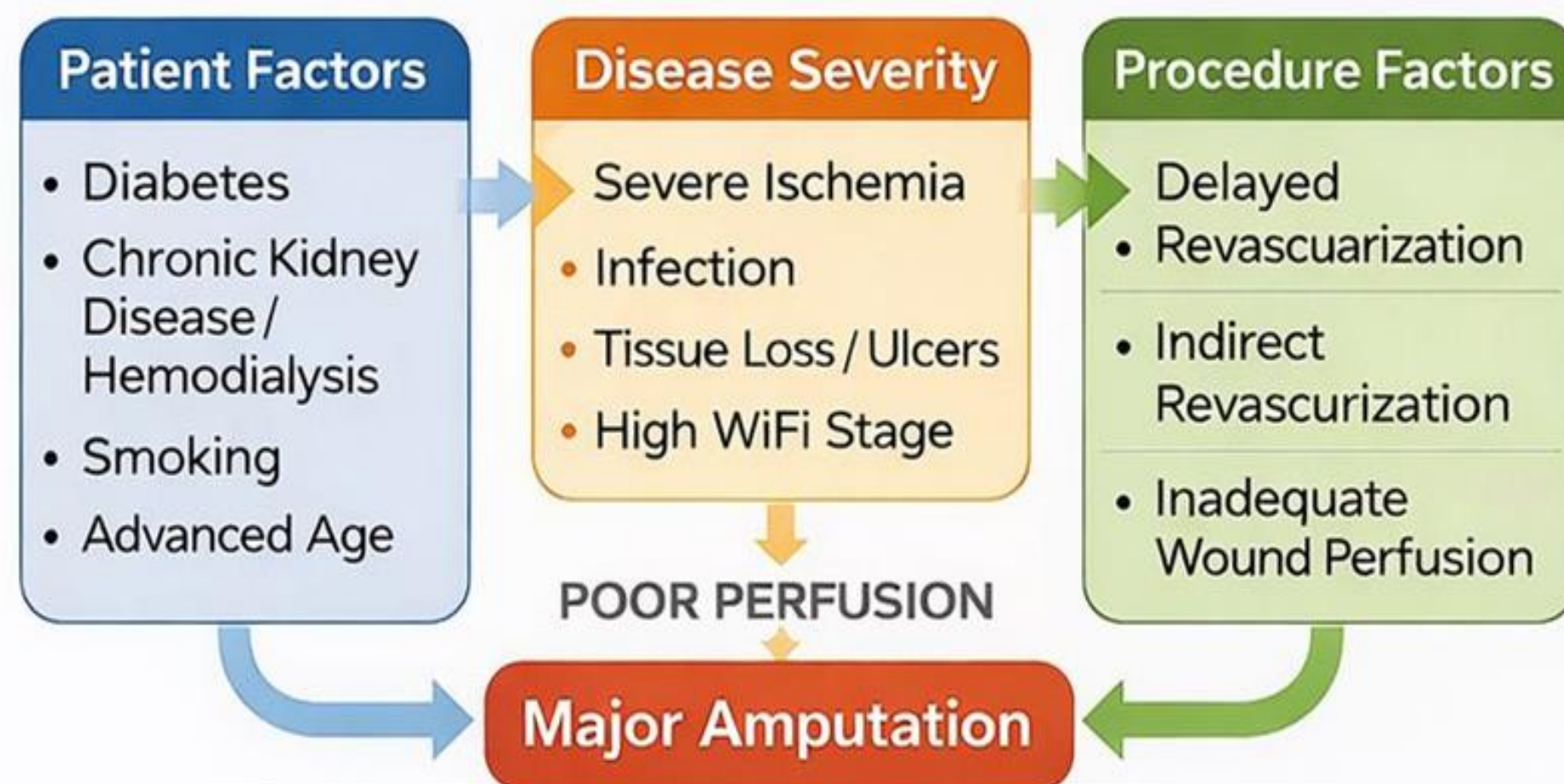


# Limb Salvage: Predictors of Major Amputation and Limb Salvage Rates in Chronic Threatening Limb Ischemia (CTLI)

Zymal Fatima Siddiqui | Fatima Rashid | Abiha Azfar | Anosha Kakar | Aroob Kakar | Haya Shoaib

## PREDICTORS OF MAJOR AMPUTATION

### Predictors of Major Amputation in Chronic Limb-Threatening Ischemia (CLTI)



## ★ CORE MESSAGE ★

*Chronic Threatening Limb Ischemia (CTLI) represents the most severe end-stage of peripheral artery disease, carrying a 25% risk of major amputation within 1 year of diagnosis. This study evaluates which clinical, vascular, and systemic factors independently predict major amputation versus successful limb salvage. Identifying these predictors enables timely, risk-based intervention — reducing preventable amputations and improving limb-preserving outcomes in this high-mortality population.*

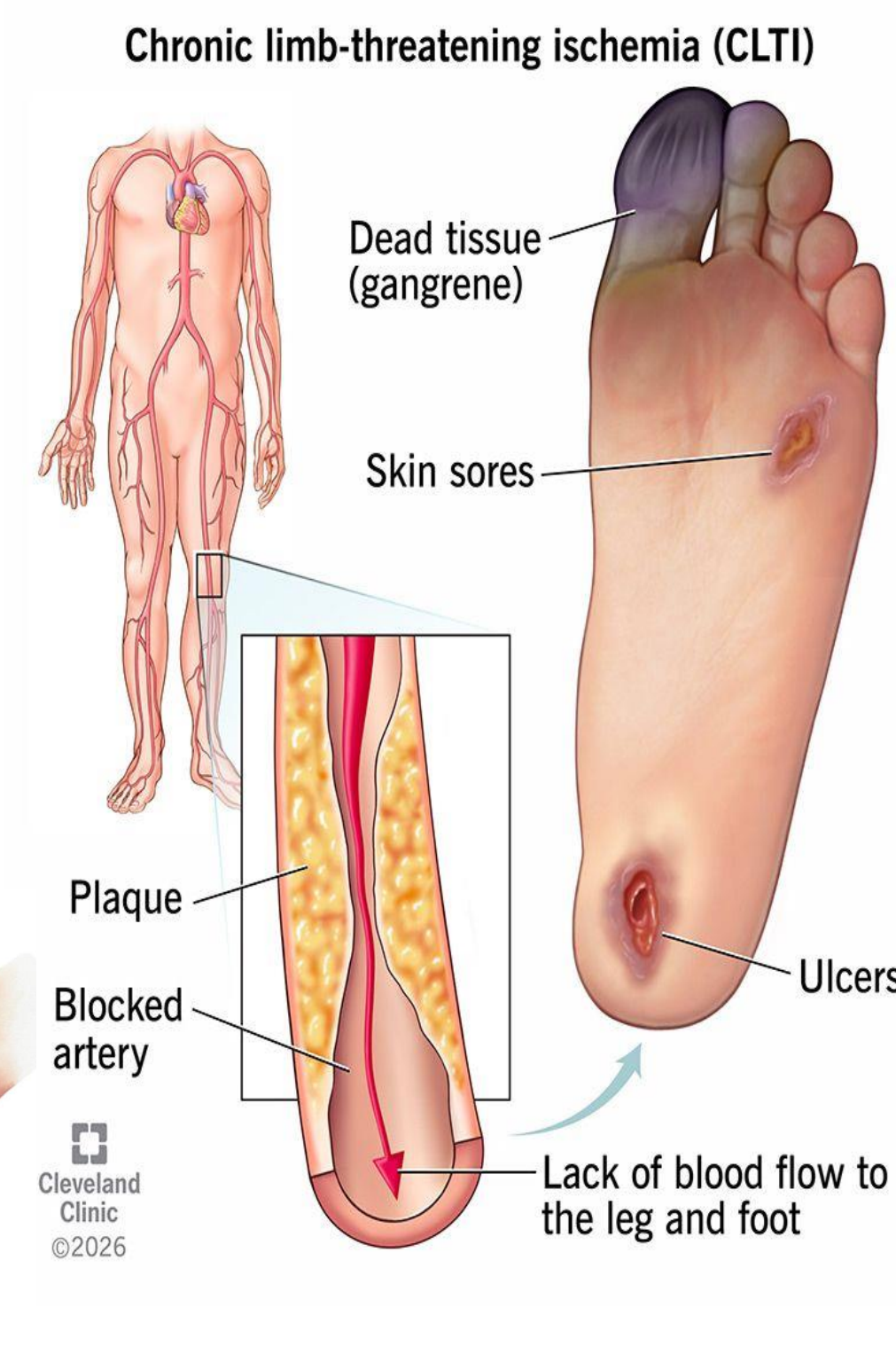
## PROTECTIVE FACTORS & LIMB SALVAGE STRATEGIES

- ✓ Successful revascularization
- ✓ Strict control of risk factors (diabetes, smoking)
- ✓ Minor amputations (toe or partial foot)
- ✓ Early diagnosis and timely treatment

## INTRODUCTION

**Chronic Limb Ischemia (CLI)** is the end stage of PAD — caused by severe narrowing of arteries due to atherosclerosis, depriving tissues of oxygen and nutrients, leading to pain, ulcers, infections, and tissue damage.

**Symptoms:** ▶ Rest pain ▶ Non-healing ulcers ▶ Gangrene



## REFERENCES

- Conte, M. S., et al. (2019). Global vascular guidelines on the management of chronic limb-threatening ischemia. *European Journal of Vascular and Endovascular Surgery*, 58(1), S1–S109. <https://doi.org/10.1016/j.ejvs.2019.05.006>
- Norgren L et al. TASC II. *Eur J Vasc Endovasc Surg*. 2007.
- Joshi GS et al. Predictors of AFS after Endovascular Intervention. *Ann Vasc Surg*. 2022.

## LIMB SALVAGE RATES & OUTCOMES - EVIDENCE-BASED DATA

### 1-Year Outcomes in Chronic Limb-Threatening Ischemia (CLTTI)



**51–63%**  
Limb Salvage  
(1 year)

**34–44%**  
Amputation-Free  
Survival

**66–83%**  
Overall  
Survival

**~18%**  
Major  
Amputation

## CLINICAL PATHWAY: CTLI MANAGEMENT

### Clinical Pathway for Chronic Limb-Threatening Ischemia (CLTI)

