

“PREVALENCE OF PERIPHERAL NEUROPATHY IN PATIENTS WITH TYPE 2 DIABETES MELLITUS USING 10 g SEMMES-WEINSTEIN MONOFILAMENT TESTING”

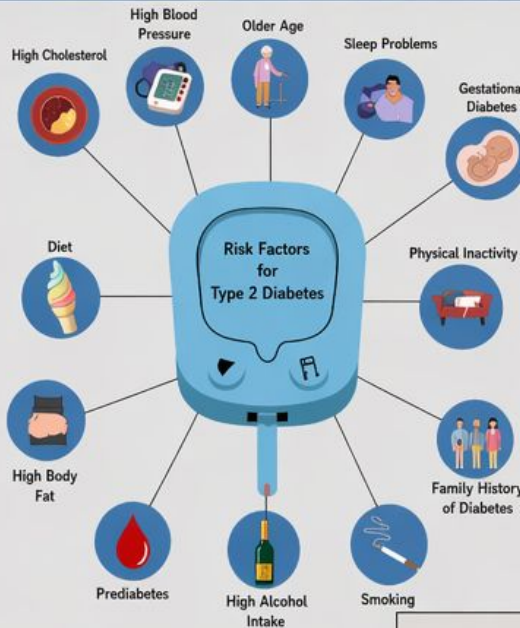
INTRODUCTION:

- Prevalent metabolic disorder DM2 (Type 2 Diabetes Mellitus) and chronic hyperglycemia.¹
- Diabetic neuropathy is a common complication of diabetes.²
- Loss of protective sensation increases the risk of foot ulceration and amputation.³
- Early identification prevents foot complications.⁴
- The 10 g Semmes-Weinstein monofilament test is straightforward and accurate.⁵



MEMBERS:

- Maimoona Imam
- Ameema Moiz
- Zoya Hassan
- Harmeen Arif
- Ambreena Hussain



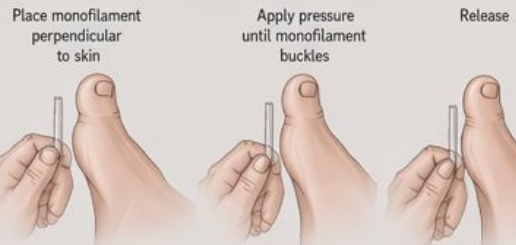
PURPOSE:

To develop an understanding of the prevalence of peripheral neuropathy in individuals living with type 2 diabetes mellitus (T2DM) using the 10 g Semmes-Weinstein monofilament test.

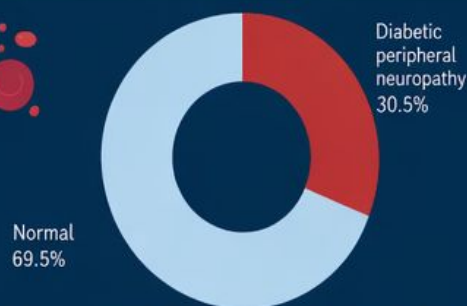
METHOD:

- **Design:** Cross-sectional study.
- **Participants:** Individuals living with a confirmed diagnosis of type 2 diabetes mellitus (T2DM).
- **Testing Tool:** 10 g Semmes-Weinstein monofilament.
- **Testing Procedure:** The monofilament was applied to designated plantar sites on both feet.
- **Results:** Loss of protective sensation was defined as the inability to perceive the monofilament at one or more of the test sites.⁶

A. Application Technique



B. Testing Sites



Prevalence of Diabetic Peripheral Neuropathy (DPN) in Type 2 Diabetes Patients (10 g Semmes-Weinstein Monofilament Test Screening)

RESULTS:

- Clinical studies using the 10 g Semmes-Weinstein monofilament test report a DPN prevalence in type 2 diabetes of 26%–38%.^{8–10}
- Loss of protective sensation: 28.85%–35.4%.
- Overall estimated prevalence of DPN: 26%–35%.



Estimated prevalence range: 26%–35%

CONCLUSION:

- Peripheral neuropathy is a common complication of type 2 diabetes mellitus (T2DM).^{1,2}
- The 10 g Semmes-Weinstein monofilament test provides a simple, inexpensive, and effective method for early identification of individuals at risk for diabetic foot ulceration and/or amputation.^{3–6}

REFERENCES:

1. American Diabetes Association. Standards of Medical Care in Diabetes—2024. *Diabetes Care*. 2024;47(Suppl. 1):S1–S322.
2. Boulton AJM, et al. Diabetic Neuropathies: A Statement by the American Diabetes Association. *Diabetes Care*. 2005;28:956–962.
3. International Diabetes Federation. *IDF Diabetes Atlas, 10th ed.* Brussels, Belgium: IDF; 2021.
4. Bus SA, et al. Guidelines on the prevention of foot ulcers in persons with diabetes (IWGDF 2023 update). *Diabetes Metab Res Rev*. 2023;39(S1):e3621.
5. Perkins BA, et al. The efficacy of monofilament testing to predict foot ulceration: a systematic review. *Diabetes Care*. 2011;34:1277–1281.
6. Armstrong DG, et al. Validation of the 10-g monofilament for the detection of protective sensation in the foot. *Diabetes Care*. 1998;21:1270–1274.
7. Abbott CA, et al. The North-West Diabetes Foot Care Study: Incidence of and risk factors for new diabetic foot ulceration. *Diabet Med*. 2002;19:377–384.
8. Tesfaye S, et al. Painful diabetic peripheral neuropathy in type 2 diabetes: Prevalence and associated factors. *Diabetes Care*. 2011;34:2224–2229.
9. Pop-Busui R, et al. Diabetic neuropathy: A position statement by the American Diabetes Association. *Diabetes Care*. 2017;40:1362–1364.
10. Malik RA, et al. Prevalence of diabetic peripheral neuropathy: A systematic review and meta-analysis. *Diabetes Metab Syndr*. 2020;14:507–514.